

# HOLD A DONATION DRIVE

## for A Sense of Home

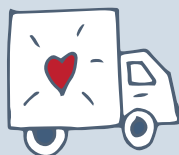
Thank you for taking the time and initiative to hold a donation drive! All furniture and housewares donated will go toward creating a home. Holding a donation drive is a fun and powerful way to support former foster youth moving into their first ever permanent space. Help us ensure that space becomes a HOME, and a launchpad towards a more prosperous tomorrow.

A donation drive is exactly how A Sense of Home began.

Our founder, Georgie Smith, posted a call to action on social media, rented a U-Haul, and collected donations. We have shared some of Georgie's tips for a successful donation drive below.

### GEORGIE'S TIPS:

1. Check with ASOH staff to find out which items are most needed at the present time.
2. Utilize photos, graphics and videos provided by ASOH to create your own call to action.
3. Reach out to your community for the most needed ASOH items. We recommend using apps like Nextdoor, Facebook, Instagram, and word of mouth! Some donors have even had their donation drive profiled in the local newspaper.
4. Once you've made your call to action, get ready to gather all information necessary for an organized collection day - and for ASOH to approve each item before accepting/collecting donations. Please gather the following information from interested donors:
  - ♥ Each donor's full name, address and email (so we can issue receipts)
  - ♥ Photos of any furniture items to be donated
  - ♥ For smaller home goods (kitchen/bathroom items, decor, etc.) provide a list of all items and the quantity of each
5. Compile required information listed in step four within the template spreadsheet provided by ASOH. This will help keep things extremely organized so you can enjoy the process and share all required information in a single email to your ASOH contact – since ASOH is not able to accept any items not approved prior to drop-off.
6. Your ASOH contact will respond within two business days, advising on which items are approved (based on current needs).
7. Schedule to collect items from your donors on a Sunday and deliver to ASOH the very next day (Monday morning between 9am-10am). When renting a U-Haul, this approach proves to be most cost-effective (24 hours) and Sundays usually have lighter traffic.



# HOLD A DONATION DRIVE

## for A Sense of Home

### QUICK TIPS:

- ♥ Each of your donors will receive an emailed receipt of all items donated
- ♥ ASOH accepts items based on our current inventory. For example, if we have 30 sofas, we most likely cannot accept more.
- ♥ Items must be in gently used condition. We only want the best for our aged-out youth who have overcome so very much to reach this moment, and their new home will become a springboard to a new and more prosperous beginning.
- ♥ Fabrics must be clean without any stains or tears
- ♥ Smaller items (such as dining tables for 4 or 6 people) are preferred, as we create homes in small spaces
- ♥ ASOH *does not* usually accept very large armoires
- ♥ ASOH *does not* accept used mattresses due to CA law
- ♥ ASOH *does not* accept dishware or utensils that are rusted or marked with stains
- ♥ ASOH *does not* accept adult clothing
- ♥ ASOH *does* accept children's clothing and shoes (must be as good as new). Clothing items must be bundled into suggested groups (by age and gender) and labeled accordingly. For example: Girl age 4-6.
- ♥ ASOH *does* accept children's toys, books and games. Items must be neatly bound and labeled with suggested age group.
- ♥ Items ASOH usually uses: [Items Installed in Each Home](#)

### GET STARTED NOW

by emailing [volunteer@asenseofhome.org](mailto:volunteer@asenseofhome.org)